



STANDARD COVER CVC

ENGINEERING

1

Ref. No. P03417

Release 09/2000

Description

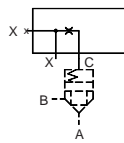
Designed to control opening & closing of the cartridge valve.

Provision for remote control.

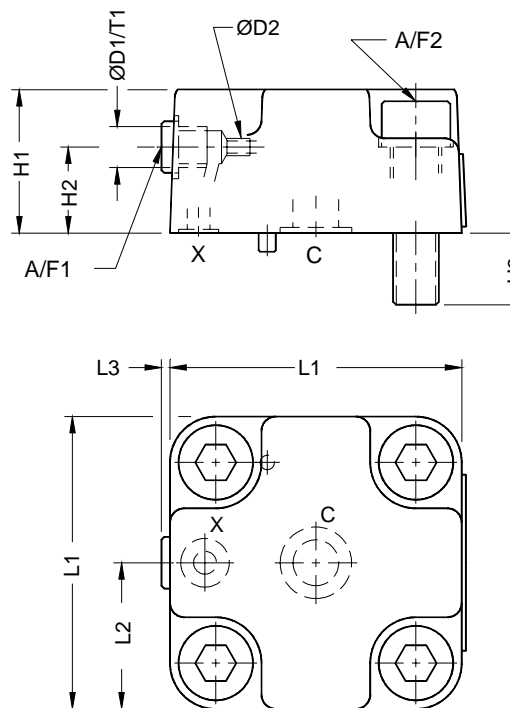
Normally used for check valve function.



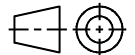
Hydraulic Symbol



Unit dimension



Dimensions in mm.



Size	L1	L2	L3	H1	H2	H3	ØD1	ØD2	T1	A/F1	A/F2	Cover fixing S.H.C.Screw (10.9)	Tightening torque
16	65	32.5	2	35	20	12	G1/8	M6	8	5	6	M8, 40 long.	3.2 da Nm.
25	85	42.5	3	40	25	18	G1/4	M6	12	6	10	M12, 45 long.	11 da Nm.
32	102	51	3	50	30	24	G1/4	M6	12	6	14	M16, 55 long.	27 da Nm.
40	125	62.5	3	60	30	30	G1/2	M8	15	10	17	M20, 70 long.	52 da Nm.

Polyhydron Pvt. Ltd.

78-80, Machhe Industrial Estate,
Machhe Belgaum - 590 014. INDIA.

Phone : +91-(0)831-2411001

Fax : +91-(0)831-2411002

E-mail : polyhydron@vsnl.com

Website : www.polyhydron.com



STANDARD COVER
CVC

ENGINEERING

2

Ref. No. P03417

Ordering code

CVC	16	X	P	10
-----	----	---	---	----

Cartridge valve cover

Size 16, 25, 32 & 40.

Control area connected to port X.

Design code subject to change. Installation dimensions remain same. for design code 10 thru 19.

Additional threaded port P in cover parallel with connected port.



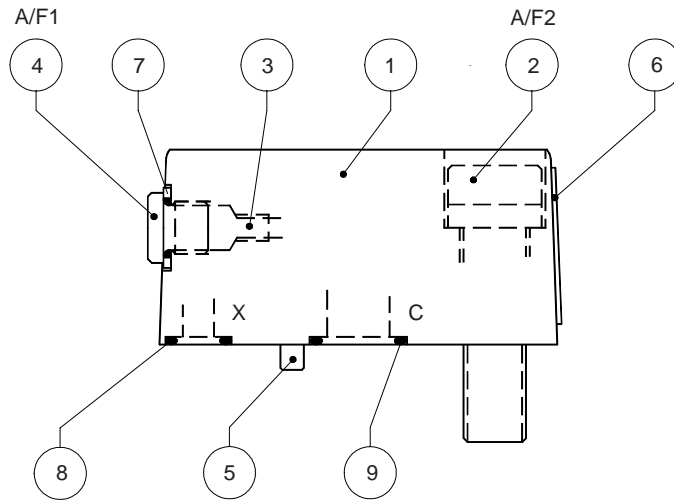
STANDARD COVER CVC

SERVICE

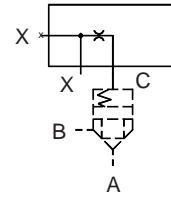
3

Ref. No. P03417

Part details



Hydraulic Symbol



Part No.	Description	Qty	16	25	32	40
1	Seal kit	1	1	1	1	1
2	O-ring (12.9)	4	Ø8x1.25	Ø12x1.75	Ø16x2	Ø20x2.5
3	Seal kit	1	Ø6x10	Ø6x10	Ø6x10	Ø8x10
4	Seal kit	1	1/8	1/4	1/4	1/2
5	Seal kit	1	1	1	1	1
6	Seal kit	1	1	1	1	1
* 7	Seal kit	1	1/8	1/4	1/4	1/2
* 8	Seal kit	3	7.5 x 1.8	9.25 x 1.8	10.6 x 1.8	12.5 x 1.8
* 9	Seal kit	1	12.5 x 1.8	15.55 x 2.62	20 x 2.65	23 x 2.65
Seal kit						
0/01	Seal kit	1	5	6	6	10
0/02	Seal kit	1	6	10	14	17

Note :

* Recommended seal kit.

While ordering the individual spares / seal kit, give part no. & complete details of model code as on the label.