



# COVER WITH BUILT IN SHUTTLE VALVE CVC\*S

ENGINEERING

1

Ref. No. P03424

Release 08/2002

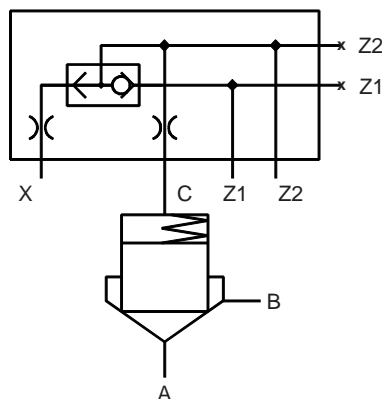
## Description

Designed to control opening & closing of the cartridge valve.

Cover has a built-in seat type shuttle valve.



## Hydraulic Symbol



**Polyhydron Pvt. Ltd.**  
78-80, Machhe Industrial Estate,  
Machhe, Belgaum - 590 014. INDIA.

**Phone** : +91-(0)831-411001  
**Fax** : +91-(0)831-411002  
**E-mail** :  
polyhydron@vsnl.com  
**Website** : www.polyhydron.com

P03424



# COVER WITH BUILT IN SHUTTLE VALVE CVC\*S

ENGINEERING

2

Ref. No. P03424

## Unit dimension

Dimensions in mm.

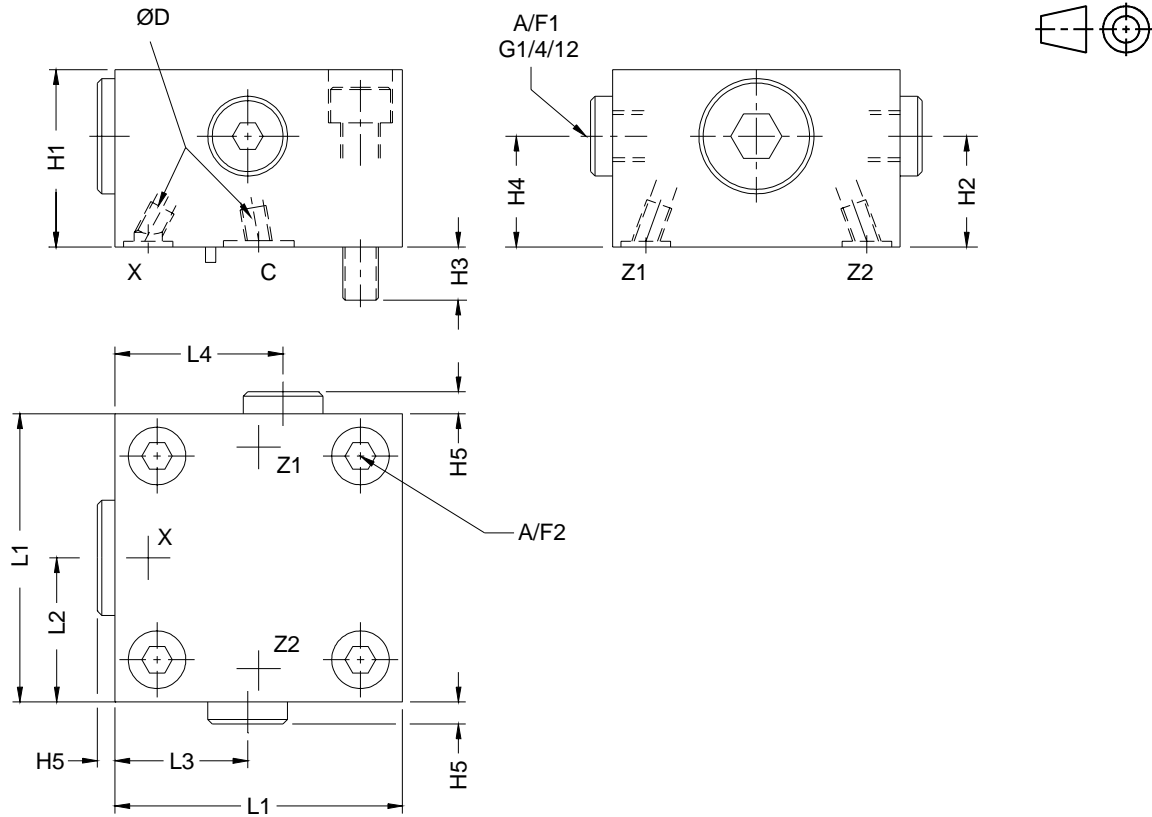
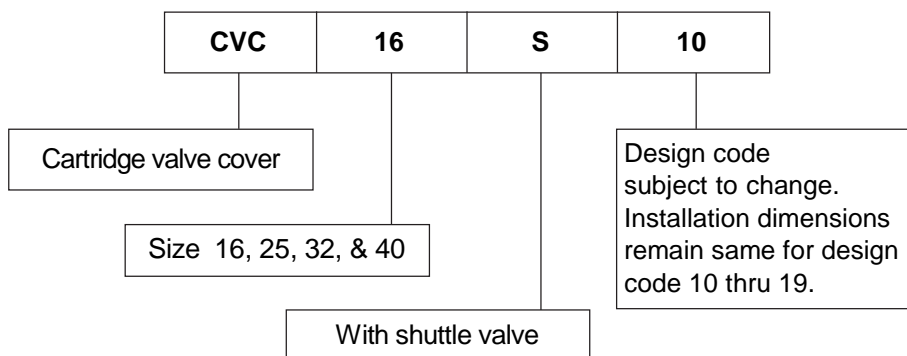


Table 1

Siz	L1	L2	L3	L4	H1	H2	H3	H4	H5	A/F1	A/F2	ØD	Cover fixing S.H.C. screw (10.9)	Tightening torque
16	65	32.	30	38	40	25	12	25	4	6	6	M6 (1.0)	M8, 40 long.	3.2 da Nm.
25	85	42.	36.	48.	40	25	18	25	4	6	10	M6 (1.0)	M12, 45 long.	11 da Nm.
32	102	51	40	51	50	20	24	30	4	6	14	M6 (1.0)	M16, 55 long.	27 da Nm.
40	125	62.	62.	62.	60	20	30	28	--	6	17	M6 (1.0)	M20, 60 long.	52 da Nm.

## Ordering code





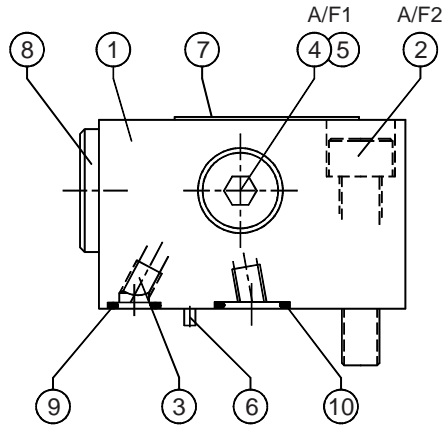
**COVER WITH BUILT IN  
SHUTTLE VALVE  
CVC\*S**

**SERVICE**

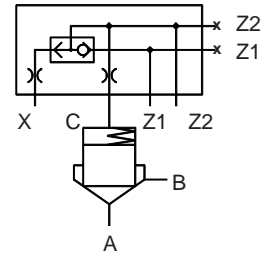
**3**

**Ref. No. P03424**

**Part details**



**Hydraulic Symbol**



Sl.no.	Description	Qty	Size 16	Size 25	Size 32	Size 40
1	Cover	1	--	--	--	--
2	S.H.C.Screw (12.9)	4	M8x1.25	M12x1.75	M16x2	M20x2.5
3	Provision for orifice	4	M6x10 deep	M6x10 deep	M6x10 deep	M6x10 deep
4	Socket head plug	2	G1/4	G1/4	G1/4	G1/4
*	Bonded seal	2	G1/4	G1/4	G1/4	G1/4
6	Dowel pin	1	--	--	--	--
7	Name plate	1	--	--	--	--
8	Shuttle valve	1	SL06K	SL06K	SL06K	SL06K
*	O' ring	3	7.5 x 1.8	9.25 x 1.8	10.6 x 1.8	12.5 x 1.8
*	O' ring	1	12.5 x 1.8	15.55 x 2.62	20 x 2.65	23 x 2.65
<b>Tools required</b>						
A/F1	Wrench key		6	6	6	6
A/F2	Wrench key		6	10	14	17

**Note :**

\* Recommended seal kit.

While ordering the individual spares / seal kit, give part no.& complete details of model code as on the label.



COVER WITH BUILT IN  
SHUTTLE VALVE  
**CVC\*S**

**SERVICE**

**4**

**Ref. No. P03424**

All rights reserved.  
Subject to revision.