



**COVER FOR FITTING
D. C. VALVE
CVC*DE**

ENGINEERING

1

Ref. No. P03428
Release 08/2002

Description

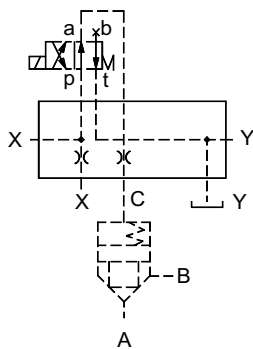
Designed to control opening & closing of the cartridge valve.

Normally used for directional control function.

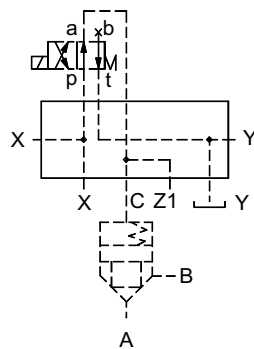
Different configurations are available as shown in the hydraulic symbol.



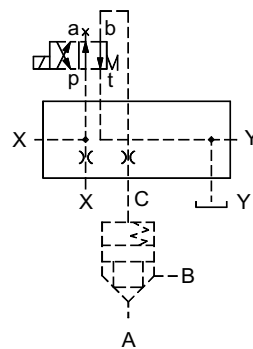
Hydraulic Symbol



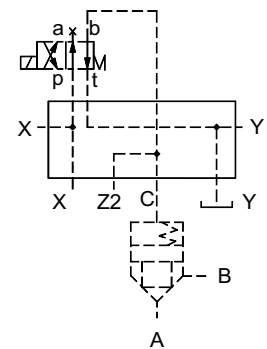
CVC*DEA***



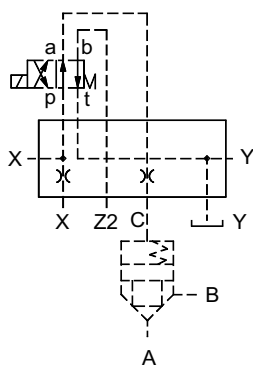
CVC*DEAZ1**



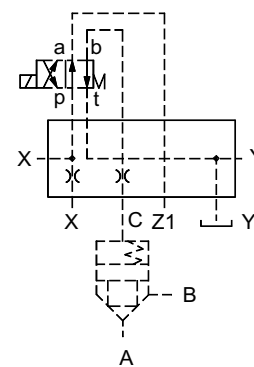
CVC*DEB***



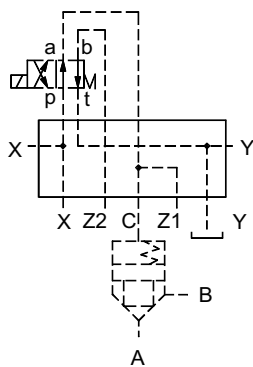
CVC*DEBZ2**



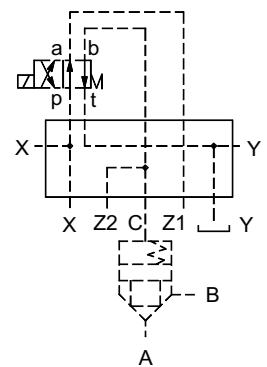
CVC*DEABZ2**



CVC*DEBAZ1**



CVC*DEAZ1BZ2**



CVC*DEBZ2AZ1**

Note : - Covers are provided with Solenoid mounting provision
Covers shown with single solenoid valves, can also be fitted with double solenoid valves.

Polyhydron Pvt. Ltd.
78-80, Machhe Industrial Estate,
Machhe, Belgaum - 590 014. INDIA.

Phone : +91-(0)831-411001
Fax : +91-(0)831-411002
E-mail : polyhydron@vsnl.com
Website : www.polyhydron.com



COVER FOR FITTING D. C. VALVE CVC*DE

ENGINEERING

2

Ref. No. P03428

Unit dimension

Dimensions in mm.

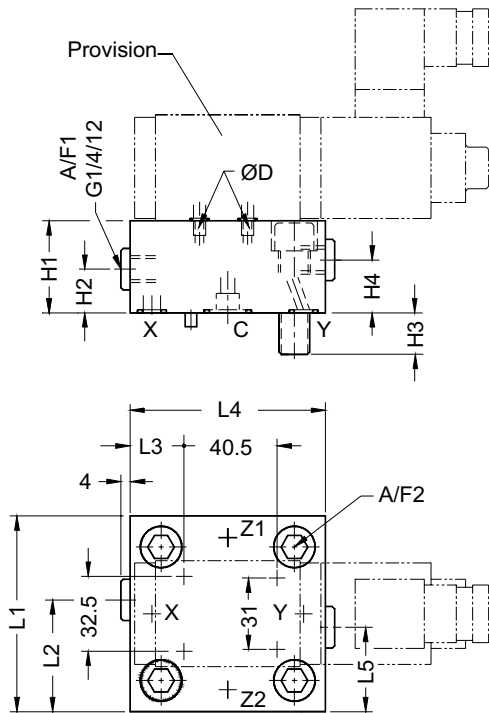
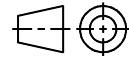


Table 1

Size	16	25	32	40
L1	65	85	102	125
L2	37	48.5	56	69
L3	14.5	23.5	32	43.5
L4	80	85	102	125
L5	28	36.5	44	56
H1	50	40	50	60
H2	15	20	16	30
H3	12	18	24	30
H4	20	20	16	30
ØD	M6 (0.8)	M6 (0.8)	M6 (0.8)	M6 (0.8)
A/F1	6	6	6	6
A/F2	6	10	14	17

Size	Cover fixing S.H.C. screw (10.9)	Tightening torque
16	M8, 40 long.	3.2 da Nm.
25	M12, 45 long.	11 da Nm.
32	M16, 55 long.	27 da Nm.
40	M20, 70 long.	52 da Nm.

Note : Mounting interface as per ISO 7368.

Ordering code

CVC 16 DE A Z1 BZ2 10

Cartridge valve cover

Size 16, 25, 32 & 40

With spool type DCV electrically operated.

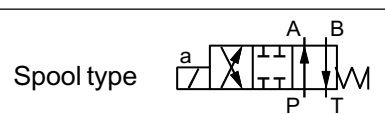
Control port normally connected to port A	A
Control port normally connected to port B	B

Control port normally connected to A with parallel connection available at Z1	Z1
Control port normally connected to B with parallel connection available at Z2	Z2
Omit if not required	

Design code subject to change.
Installation dimensions remain same for design code 10 thru 19

AZ1	when B port used as control port, A port available at Z1
BZ2	when A port used as control port, B port available at Z1
Omit if not Required	

Note : Solenoid (refer spool type) to be ordered separately.





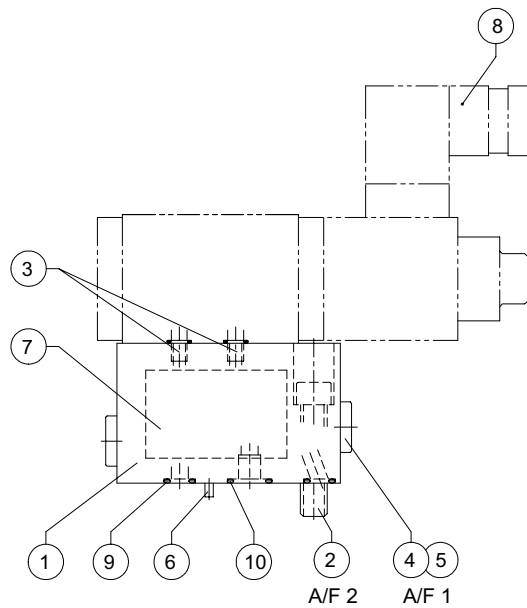
**COVER FOR FITTING
D. C. VALVE
CVC*DE**

SERVICE

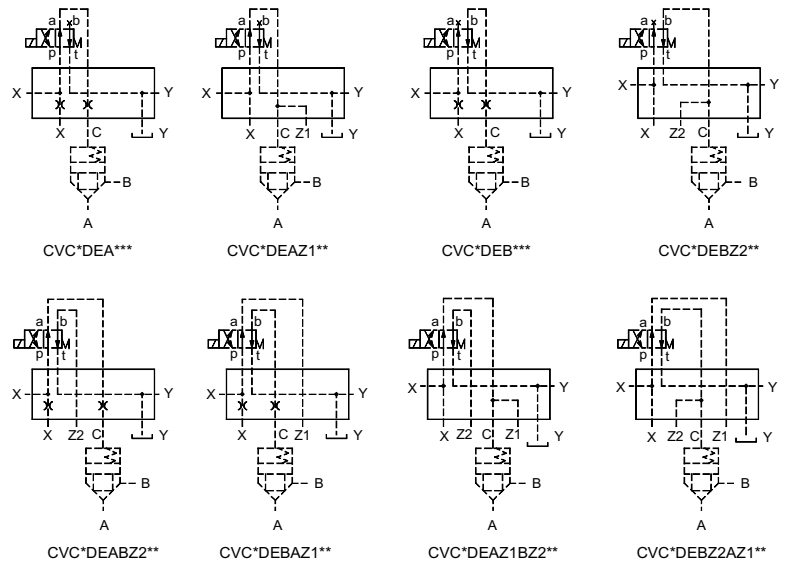
3

Ref. No. P03428

Part Details



Hydraulic Symbol



Sl.no	Description	Qty	Size 16	Size 25	Size 32	Size 40	
1	Cover	1	--	--	--	--	
2	S.H.C.Screw (12.9)	4	M8x1.25	M12x1.75	M16x2	M20x2.5	
3	Provision for plug	2	M6x10 deep	M6x10 deep	M6x10 deep	M6x10 deep	
4	Socket head Plug	2 / 4	G 1/4	G 1/4	G 1/4	G 1/4	
*	5	Bonded seal	1	G 1/4	G 1/4	G 1/4	G 1/4
	6	Dowel pin	1	--	--	--	--
	7	Name plate	1	--	--	--	--
	8	Soln.D.C.Valve	1	--	--	--	--
*	9	O' ring	3	7.5 x 1.8	9.25 x 1.8	10.6 x 1.8	12.5 x 1.8
*	10	O' ring	1	12.5 x 1.8	15.55 x 2.62	20 x 2.65	23 x 2.65
Tools required							
A/F1	Wrench key	1	6	6	6	6	
A/F2	Wrench key	1	6	10	14	17	

Note :

* Recommended seal kit.

While ordering the individual spares / seal kit, give part no. & complete details of model code as on the label.
Covers shown with single solenoid valves, can also be fitted with double solenoid valves.



COVER FOR FITTING
D.C. VALVE
CVC*DE

SERVICE

4

Ref. No. P03428

All rights reserved.
Subject to revision.