



COVER WITH STROKE LIMITER CVC*T**

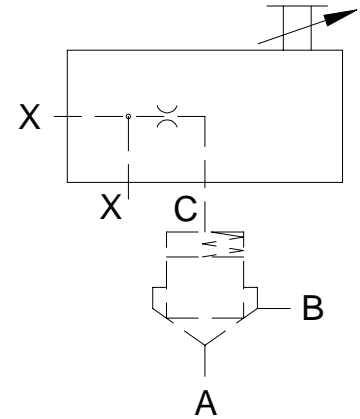
ENGINEERING

1

Ref. No. P03438
Release 01/2003

Description

Cover with stroke limiter. Controls the maximum opening of the cartridge valve.



Hydraulic symbol

Unit dimension

Dimensions in mm.

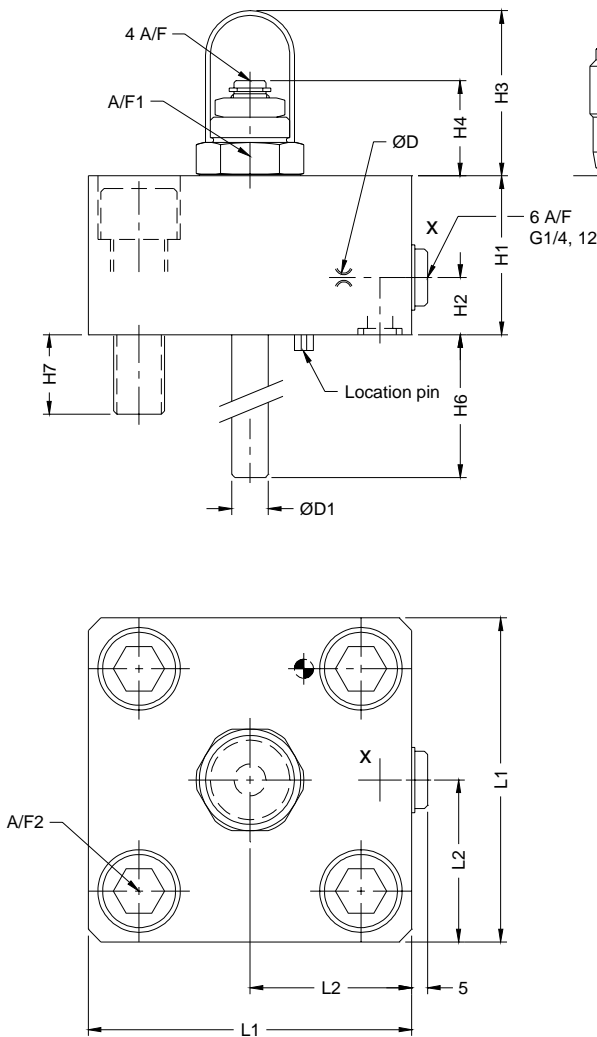


Table 1

Size	16	25	32	40
H1	35	40	50	60
H2	15	19	18	25
H3	49	49	52	59
H4	Open	34.7	34.5	40
	Close	26.7	26.5	30
H5	Open	42.2	42	50
	Close	34.2	34	40
H6	Close	35.8	53	59
	Open	12	18	24
H7	12	18	24	30
L1	65	85	102	125
L2	32.5	42.5	51	62.5
ØD	M6(0.8)	M6(0.8)	M6(0.8)	M6(0.8)
ØD1	6	9.5	11.5	14
A/F1	27	27	32	41
A/F2	6	10	14	17
Size	S.H.C. Screws 4 nos. (10.9)		Torque da Nm	
16	M8 x 40 L		3.2	
25	M12 x 45 L		11	
32	M16 x 55 L		27	
40	M20 x 70 L		52	

Note : Mounting interface as per ISO 7368.

Polyhydron Pvt. Ltd.
78-80, Machhe Industrial Estate,
Machhe, Belgaum - 590 014. INDIA.

Phone : +91-(0)831-411001
Fax : +91-(0)831-411002
E-mail : polyhydron@vsnl.com
Website : www.polyhydron.com



COVER WITH STROKE LIMITER
CVC*T**

ENGINEERING

2

Ref. No. P03438

Ordering code

CVC 16 T S X 10

Cartridge valve cover

Size 16, 25, 32 & 40.

Stroke Limiter

Hand Knob	H
-----------	---

Setscrew	S
----------	---

Design code subject to change. Installation dimensions remain same. for design code 10 thru 19

Control area connected to	Type
Port X	X
Port Y	Y
Port Z1	Z1
Port Z2	Z2