



COVER WITH BUILT IN SHUTTLE VALVE FOR FITTING D. C. VALVE. CVC*SDE

ENGINEERING

1

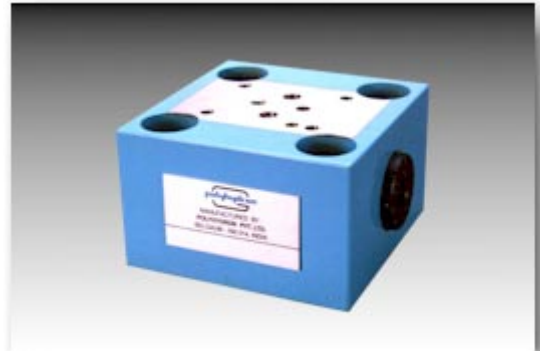
Ref. No. P03477
Release 01/2005

Description

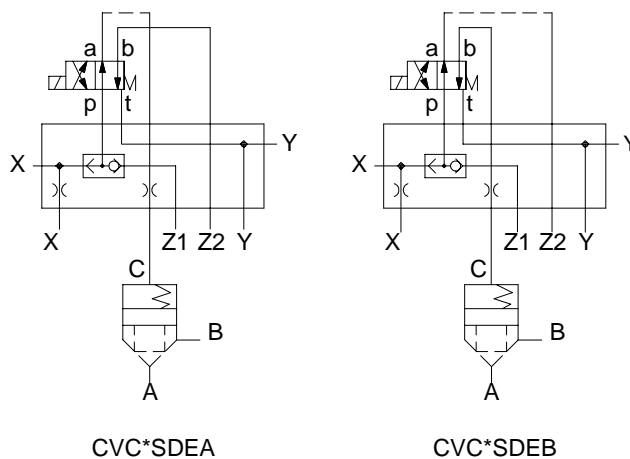
Designed to control opening & closing of the cartridge valve.

Cover has built-in seat type shuttle valve.

Configurations shown in the hydraulic symbol are available.



Hydraulic symbol



Polyhydron Pvt. Ltd.
78-80, Machhe Industrial Estate,
Machhe, Belgaum - 590 014. INDIA.

Phone : +91-(0)831-411001
Fax : +91-(0)831-411002
E-mail :
polyhydron@vsnl.com
Website : www.polyhydron.com

P03477



COVER WITH BUILT IN SHUTTLE VALVE FOR FITTING D. C. VALVE.
CVC*SDE

ENGINEERING

2

Ref. No. P03477

Unit dimension

Dimensions in mm.

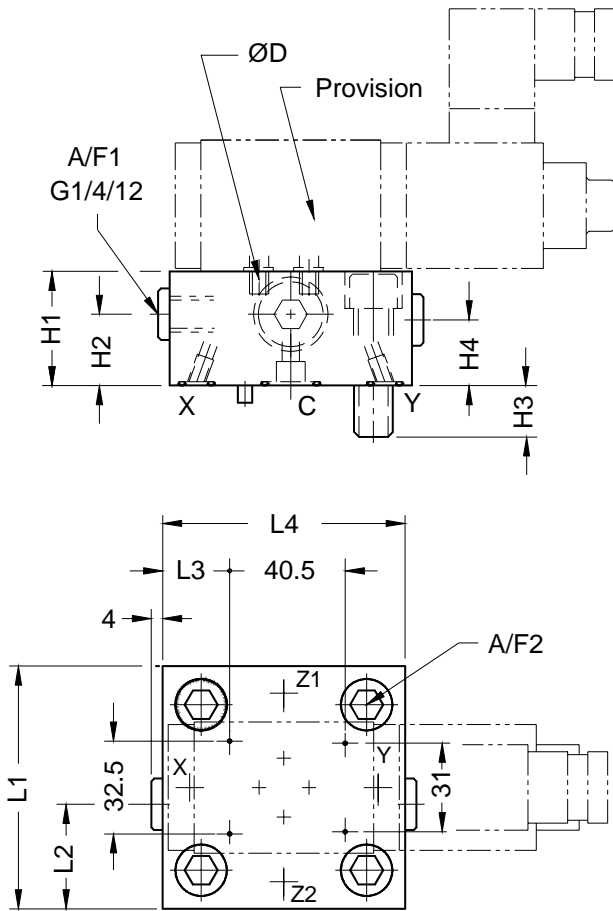
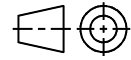
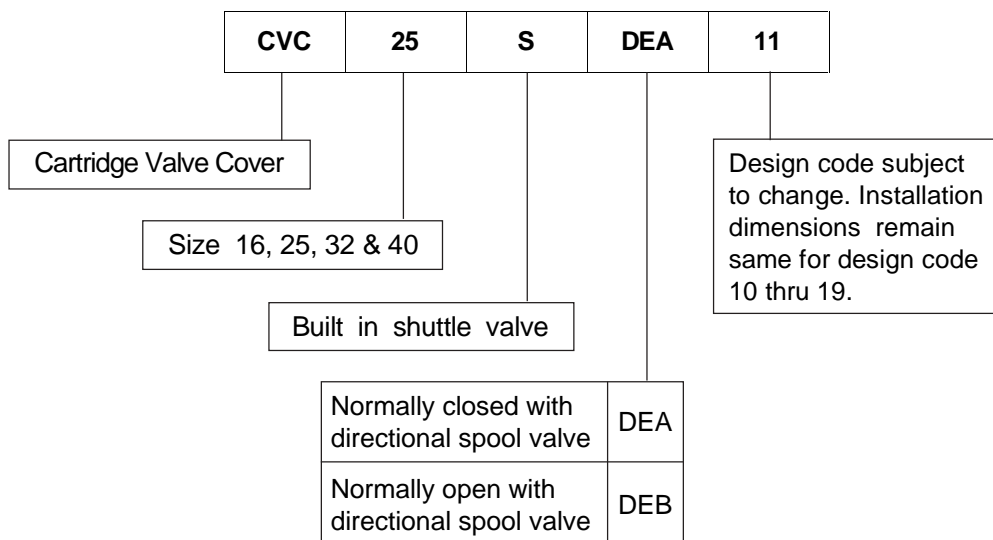


Table 1

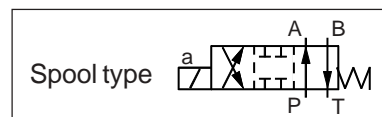
Size	16	25	32	40
L1	65	85	102	125
L2	--	36.5	51	50.5
L3	26.2	23.5	32	43.5
L4	75	85	102	125
H1	50	40	50	60
H2	--	25	--	30
H3	12	18	24	30
H4	--	23	--	30
ØD	M6 (0.8)			
A/F1	6	6	6	6
A/F2	6	10	14	17
Size	Cover fixing S.H.C. screw (10.9)		Tightening torque	
16	M8, 40 long.		3.2 da Nm.	
25	M12, 45 long.		11 da Nm.	
32	M16, 55 long.		27 da Nm.	
40	M20, 70 long.		52 da Nm.	

Note : Mounting interface as per ISO 7368.

Ordering code



Note : Solenoid (refer spool type) to be ordered separately.





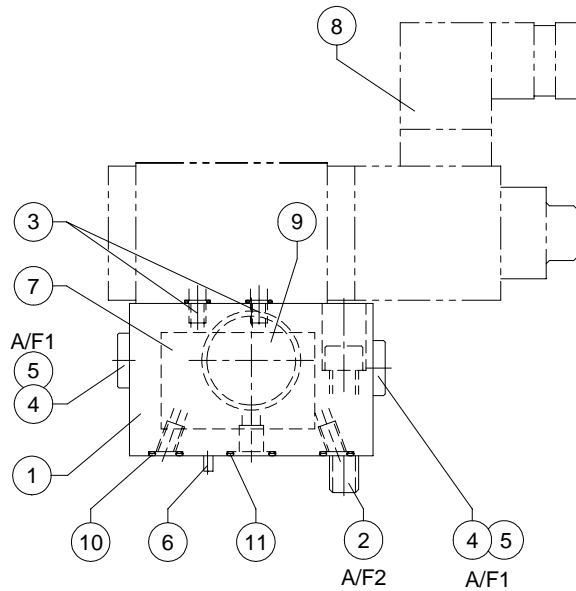
COVER WITH BUILT IN SHUTTLE VALVE FOR FITTING D. C. VALVE.
CVC*SDE

SERVICE

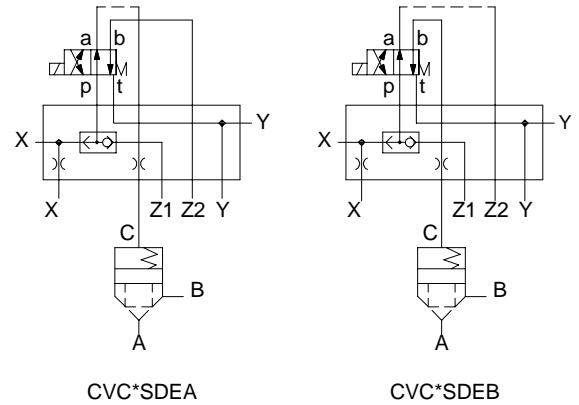
3

Ref. No. P03477

Part details



Hydraulic symbol



Sl.no.	Description	Qty	Size 16	Size 25	Size 32	Size 40	
1	Cover	1	--	--	--	--	
2	S.H.C.Screw (12.9)	4	M8x1.25	M12x1.75	M16x2	M20x2.5	
3	Provision for orifice	5	M6x10 deep	M6x10 deep	M6x10 deep	M6x10 deep	
4	Socket head plug	2	G1/4	G1/4	G1/4	G1/4	
*	5	Bonded seal	2	G1/4	G1/4	G1/4	G1/4
	6	Dowel pin	1	--	--	--	--
	7	Name plate	1	--	--	--	--
	8	Soln. D.C.Valve	1	--	--	--	--
	9	Shuttle valve	1	SL06K	SL06K	SL06K	SL06K
*	10	O' ring	3	7.5 x 1.8	9.25 x 1.8	10.6 x 1.8	12.5 x 1.8
*	11	O' ring	1	12.5 x 1.8	15.55 x 2.62	20 x 2.65	23 x 2.65
Tools required							
A/F1	Wrench key		6	6	6	6	
A/F2	Wrench key		6	10	14	17	

Note :

* Recommended seal kit.

While ordering the individual spares / seal kit, give part no.& complete details of model code as on the label.



COVER WITH BUILT IN SHUTTLE
VALVE FOR FITTING D. C. VALVE.
CVC*SDE

SERVICE

4

Ref. No. P03477

All rights reserved.
Subject to revision.