



# PRESSURE CONTROL MODULE PCM 06-06

ENGINEERING

1

Ref. No. P03645

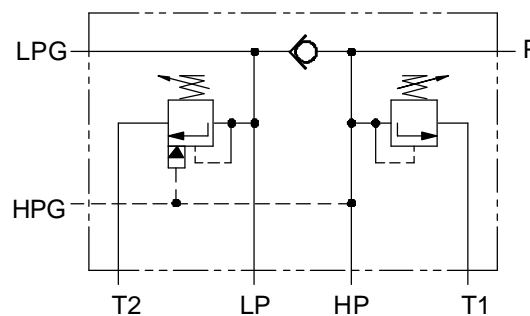
Release 04/2008

## Description

Designed to control double pumps of a Hi-Low system. Unloads low pressure pump when system pressure rises above the pressure set on unloader valve. Relieves high pressure pump when system pressure reaches the value.



Hydraulic Symbol



### Connection details.

- P ..... Out let connection.
- LPG ..... Gauge connection on low pressure pump line.
- HPG ..... Gauge connection on high pressure pump line.
- T ..... Tank connection.
- HP ..... High pressure pump connection.
- LP ..... Low pressure pump connection.

**Polyhydron Pvt. Ltd.**  
78-80, Machhe Industrial Estate,  
Machhe, Belgaum - 590 014. INDIA.

**Phone** : +91-(0)831-2411001  
**Fax** : +91-(0)831-2411002  
**E-mail** : polyhydron@gmail.com  
**Website** : www.polyhydron.com



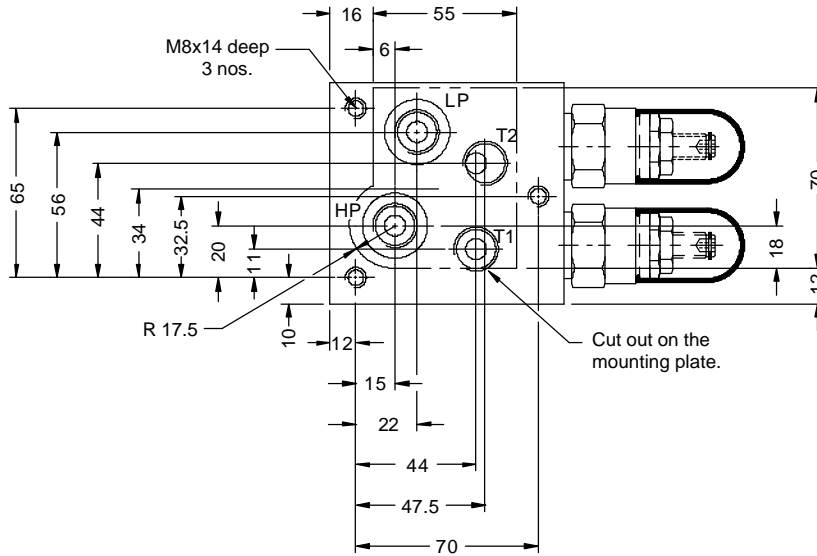
**PRESSURE CONTROL MODULE  
PCM 06-06**

**ENGINEERING**

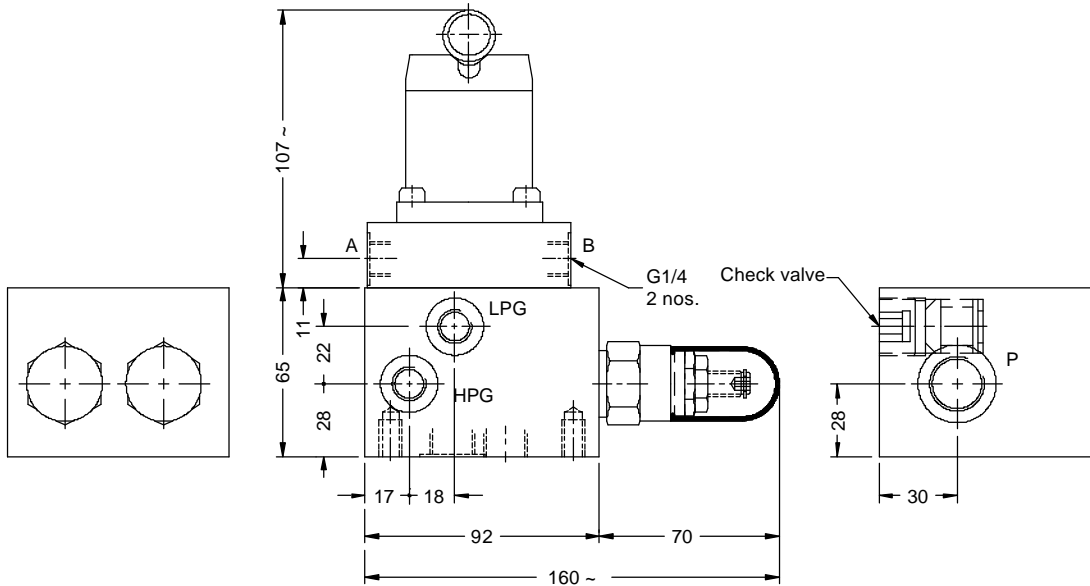
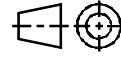
**2**

**Ref. No. P03645**

**Unit dimension**



Dimensions in mm.



Port details.	
HP	- G3/8
LP	- G3/8
P	- G1/2
HPG	- G1/4
LPG	- G1/4
T1	- G3/8
T2	- G3/8

