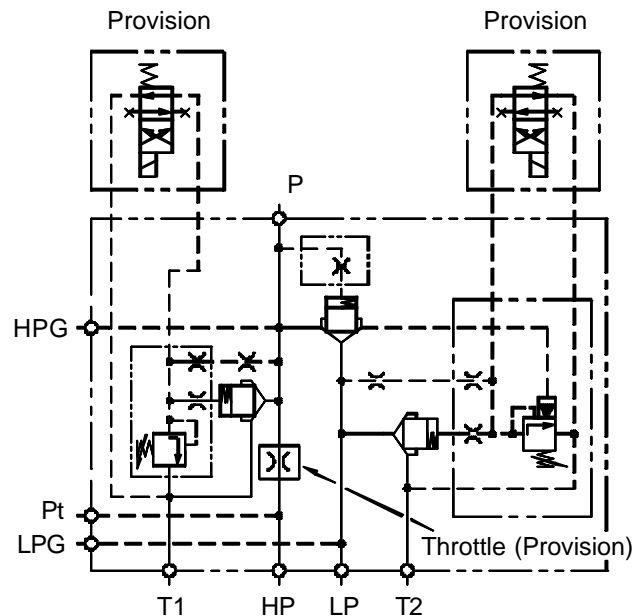


**Description**

Designed to control double pumps of Hi-Low system. Unloads low pressure pump when system pressure rises above the pressure set on Unloader valve. Relieves high pressure pump when system pressure reaches the value. Solenoid unloading facility available as an option.



**Hydraulic symbol**



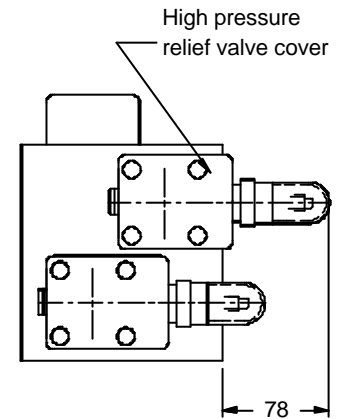
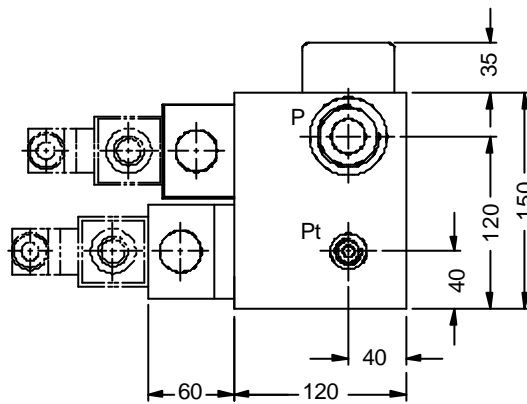
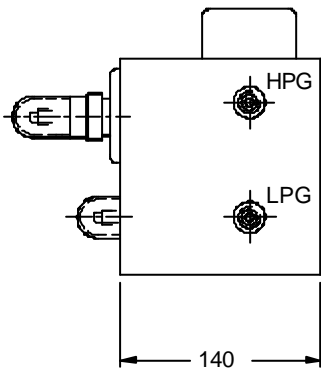
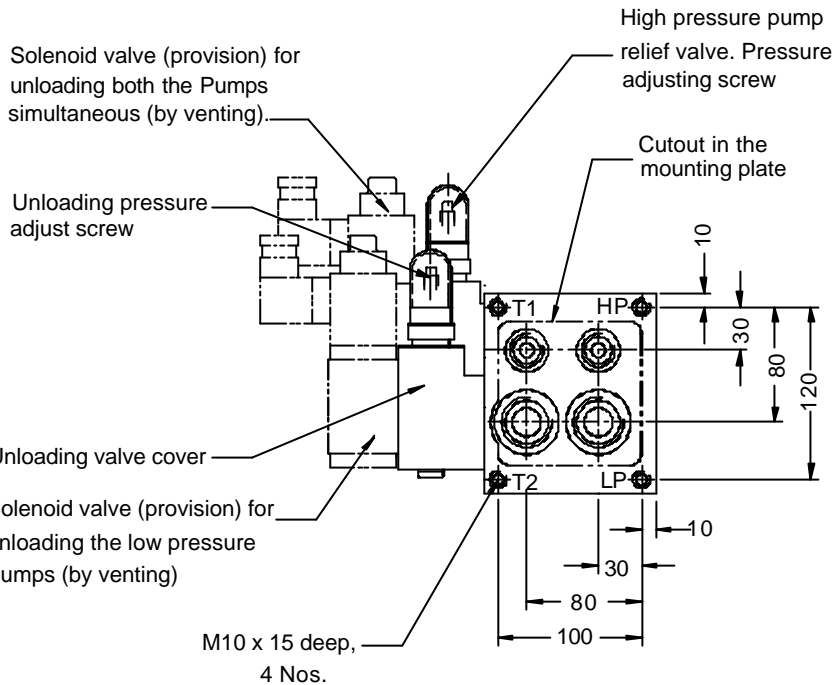
PCM 20/16

**Connection details**

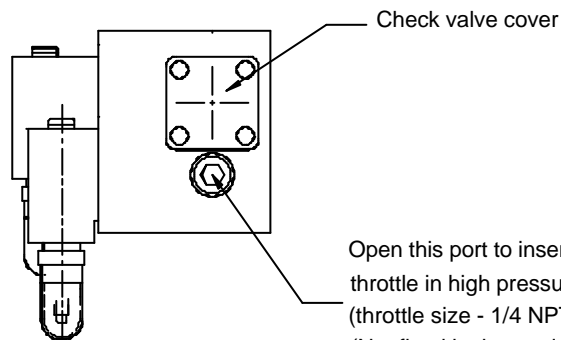
- |     |      |  |
|-----|------|--|
| HP  | ---- | High pressure pump connection.                   |
| LP  | ---- | Low pressure pump connection.                    |
| P   | ---- | Out-let connection.                              |
| HPG | ---- | Gauge connection on high pressure pump line.     |
| LPG | ---- | Gauge connection on low pressure pump line.      |
| Pt  | ---- | Pilot pressure connection (Optional).            |
| T1  | ---- | Tank connection of high pressure relief valve.   |
| T2  | ---- | Tank connection of low pressure unloading valve. |

**Unit dimension**

Dimensions in mm.



Port	Details
HP	G3/4
LP	G1
P	G1 1/4
Pt	G1/4
HPG	G1/4
LPG	G1/4
T1	G3/4
T2	G1



Open this port to insert throttle in high pressure line. (throttle size - 1/4 NPT). (Not fixed in the module, unless specified.)



**PRESSURE CONTROL MODULE  
PCM 20 - 16**

**ENGINEERING**

**3**

**Ref. No. P04902**

**Technical specification**

Construction PCM 20/16 .....Two stage poppet type high pressure relief valve.  
Two stage poppet type low pressure unloading valve. All valves fitted in cavities machined as per DIN 24342

Mounting .....Threaded bodies : company standards

Mounting position .....Optional

Flow direction .....As per hydraulic symbol.

Operating pressure .....For low pressure pump 50 and 100 bar.  
For high pressure pump 100, 200, 315 bar.

Hydraulic medium .....Mineral oil

Viscosity range .....10 cSt to 380 cSt.

Fluid temperature range .....-20 °C to +70 °C

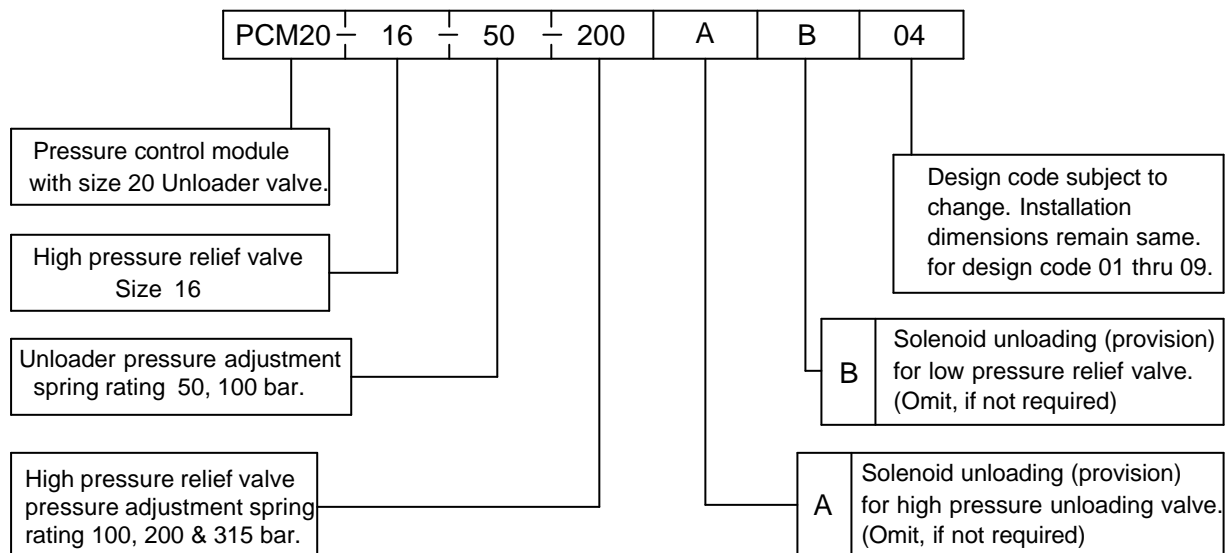
Fluid cleanliness requirement .....As per ISO 16/13

Maximum flow handling capacity ..... Model                      High pressure                      Low pressure  
PCM 20/16                      100 l / min.                      160 l / min.

Combined flow in case of model PCM 20/16 must not be more than : 260l/min.

Mass .....14 Kg. APPROX.

**Ordering code**



Note : Solenoid (refer spool type) and Subplate to be ordered separately.

