



CHECK VALVE C

ENGINEERING

1

Ref. No. P04903
Release 09/2004

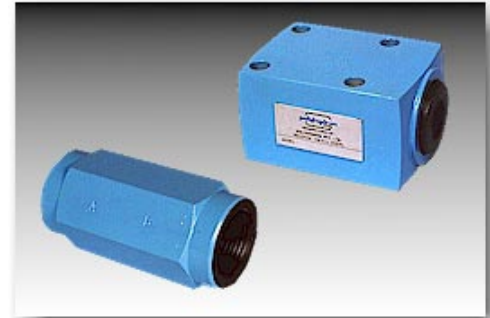
Description

Seat type valves.

Allow free flow from Port A to Port B and offer leakage free closure in opposite direction.

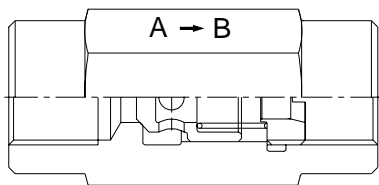
Two standard mounting styles :

- 1] Inline mounting C*T
- 2] Subplate mounting C*S

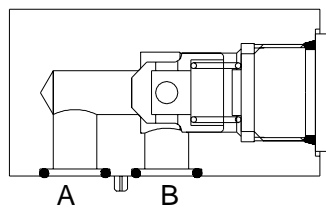


Section

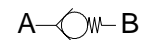
Line mounting valve



Subplate mounting valve

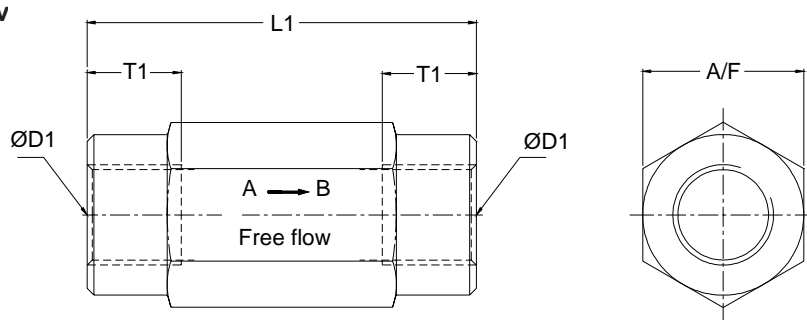


Hydraulic Symbol



Unit Dimensions

Line mounting valv



Dimensions in mm.

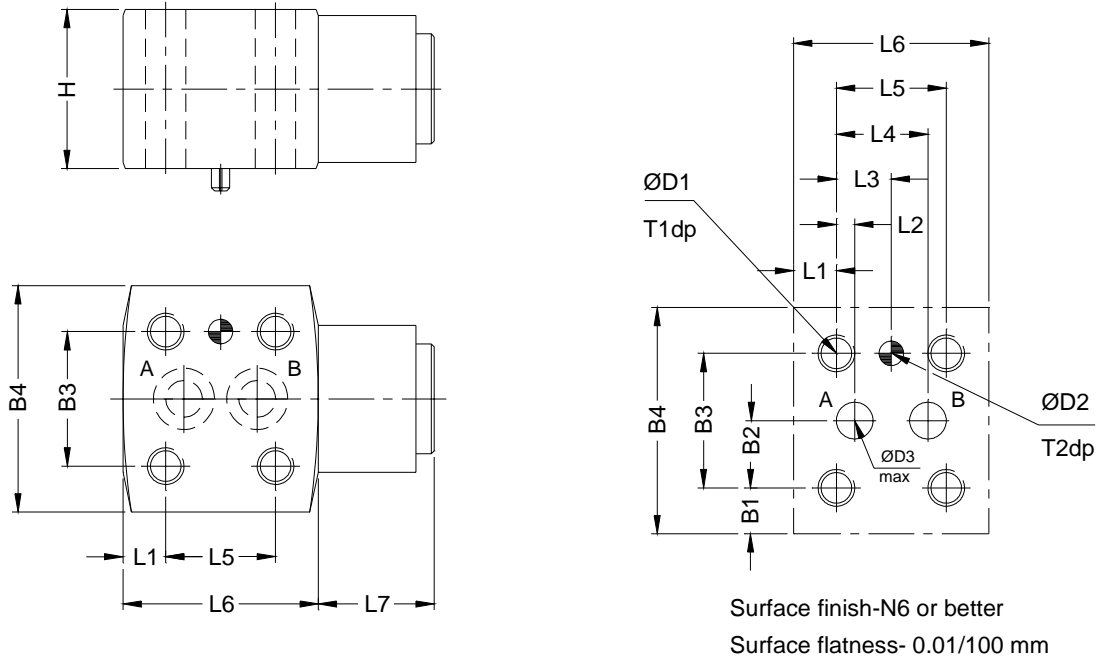
Size	ØD1	L1	T1	A/F
06	G1/4	58	12	19
08	G3/8	58	14	24
10	G1/2	72	14	30
15	G3/4	85	18	36
20	G1	98	18	46
25	G1 1/4	120	20	60
30	G1 1/2	132	22	65

Polyhydron Pvt. Ltd.

78-80, Machhe Industrial Estate, Machhe
Belgaum - 590 014. INDIA.

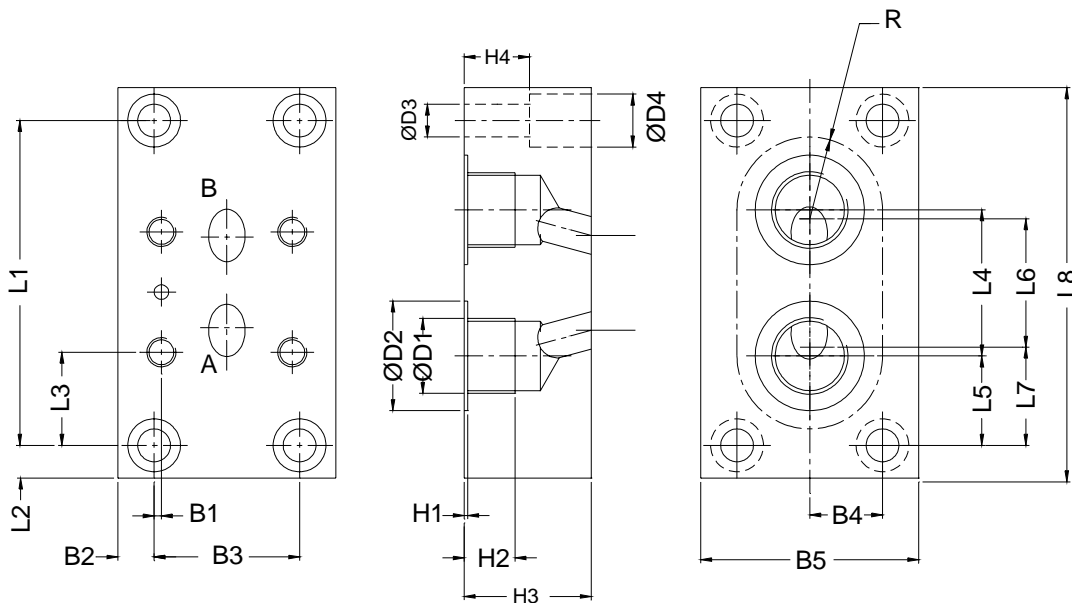
Phone : +91-(0)831-2411001
Fax : +91-(0)831-2411002
E-mail : polyhydron@vsnl.com
Website : www.polyhydron.com

Subplate mounting valve



Size NG	L1	L2	L3	L4	L5	L6	L7	H	B1	B2	B3	B4	D1Ø	D2Ø	D3Ø	T1	T2
06	7	3	9	15	18	32	19	26	7.5	11	22	37	M6	4	6	12	5
10	9	6	16.5	27	33	51	23	38	9.5	18	36	55	M8	4	11	14	5
20	10	10	27.5	45	55	75	27	55	10	25	50	70	M10	7	22	19	8
30	15	20	42.5	65	85	123	34	82	15	37.5	75	105	M12	7	31	22	8

Subplate





CHECK VALVE C

ENGINEERING

3

Ref. No. P04903

Size NG	Model	Mass Kg.	B1	B2	B3	B4	B5	D1Ø	D2Ø	D3Ø	D4Ø	H1	H2	H3	H4
,06	NSC03G02	0.75	5	6	33	16.5	45	G1/4	22	6.6	10	1	12	30	20
	G3/8							25							
10	NSC05G04	1.4	2	10	40	20	50	G1/2	30	9	14.5	1	14	35	18
	G3/4							36							
20	NSC08G06	3.5	5	10	60	30	80	G3/4	36	11	17.5	1	16	42	25
	G1							44							
30	NSC09G10	8.5	7.5	10	90	45	110	G1 1/4	54	11	17.5	1	18	55	40
	G1 1/2							60	20						

Size NG	Model	L1	L2	L3	L4	L5	L6	L7	L8	R	Valve fixing screws S.H.C.S.	Tightening torque in Nm
,06	NSC03G02	62	6	22	27	17.5	27	17.5	74	16	M6 x 35 - 4 Nos.	15
	NSC03G03				30	19	30	19				
10	NSC05G04	89	9	28	40	24.5	40	24.5	107	20	M8 x 50 - 4 Nos.	35
	NSC05G06				45	22	45	22				
20	NSC08G06	120	10	32.5	50	35	50	35	140	30	M10 x 70 - 4 Nos.	70
	NSC08G08				60	30	60	30				
30	NSC09G10	140	20	47.5	70	35	70	35	180	40	M12 x 100 - 4 Nos.	115
	NSC09G12				80	30	80	30				

Technical Specifications

Construction	Seat type.
Mounting	Inline or subplate mounting.
Interface	Factory standard.
Mounting position	Optional.
Flow direction	Free flow from A to B.
Operating pressure	700 bar max. for size 06. 350 bar for size 10, 20 & 30.
Hydraulic medium	Mineral oil.
Viscosity range	10 cSt to 380 cSt.
Fluid temperature range	-20 °C to +70 °C.
Fluid cleanliness requirement	As per ISO code 16/13 or better.

Nominal flow handling capacity

Size	6	8	10	15	20	25	30
Flow (l/min)	10	20	30	80	120	220	280

Cracking pressure available

0.5, 1.5, 3 or 5 bar.

Mass in kg. (Inline mounting)

Size	6	8	10	15	20	25	30
Mass kg.	0.1	0.16	0.31	0.46	0.95	1.88	2.3

(Subplate Mounting)

Size	06	10	20	30
Mass kg.	0.27	1	2.8	8.15



CHECK VALVE C

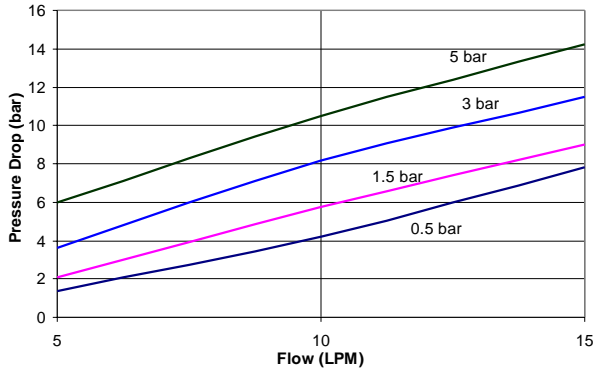
ENGINEERING

4

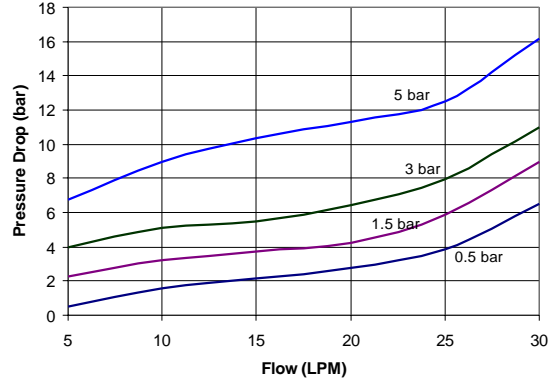
Ref. No. P04903

Performance curve Oil used : ISO VG 46. Test Temp 40 deg. C

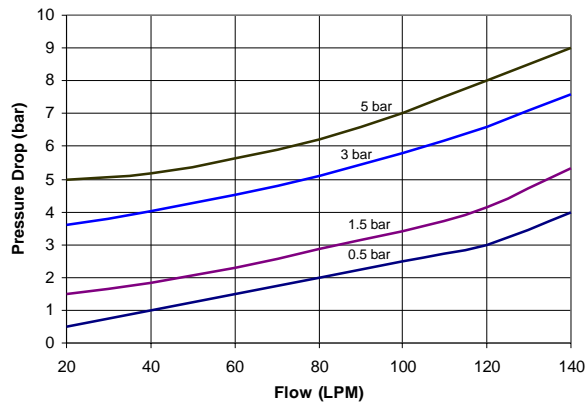
Check Valve C06S*-03



Check Valve C10S*-03



Check Valve C20S*-03



Ordering Code

C 06 T 1 - 03

Check Valve

Size
06, 08, 10, 15, 20, 25 & 30.

Mounting	
Inline	T
Subplate	S

Design code subject to change. Installation dimensions remain same. for design code 01 thru 09.

Cracking pressure	
1	0.5 bar
2	1.5 bar
3	3.0 bar
4	5.0 bar

Note : Subplate type valves are available only in Size 06, 10, 20 and 30.
Subplate to be ordered separately.

All rights reserved.
Subject to revision.