



LEVER OPERATED DIRECTIONAL CONTROL VALVE DL10

ENGINEERING

1

Ref. No. P04909

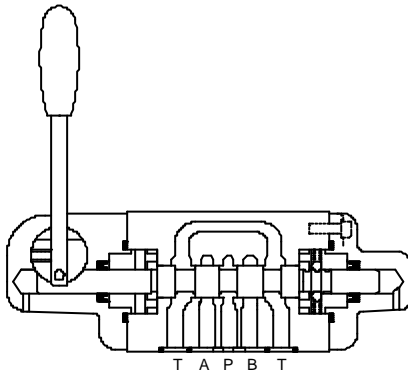
Release 12/2007

Description

Completely encapsulated mechanism for protection against dirt. Five chamber design for better reduction in dynamic forces and longer valve life. Mounting styles -- Subplate body. Available as spring centred, spring off-set or detented model. Operating head can be rotated by 90° x 4 around spool axis for flexibility in mounting. Valve mounting interface conforms to International and National Standards. Port configuration conforms to Factory Standards.

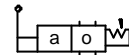


Section

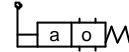


Hydraulic Symbol

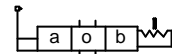
2 position detented



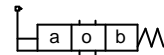
2 position spring offset



3 position detented



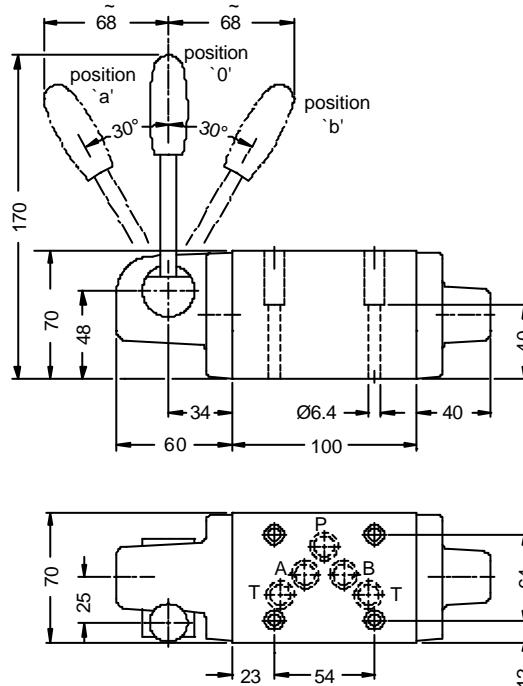
3 position spring centred



Unit dimension

Subplate mounting body

Dimensions in mm.



O'Ring size at port P, A, B & T : 12 i.d. x 2 c.s.d.

Polyhydron Pvt. Ltd.

78-80, Machhe Industrial Estate,
Machhe, Belgaum - 590 014. INDIA.

Phone : +91-(0)831-2411001

Fax : +91-(0)831-2411002

E-mail : polyhydron@vsnl.com

Website : www.polyhydron.com



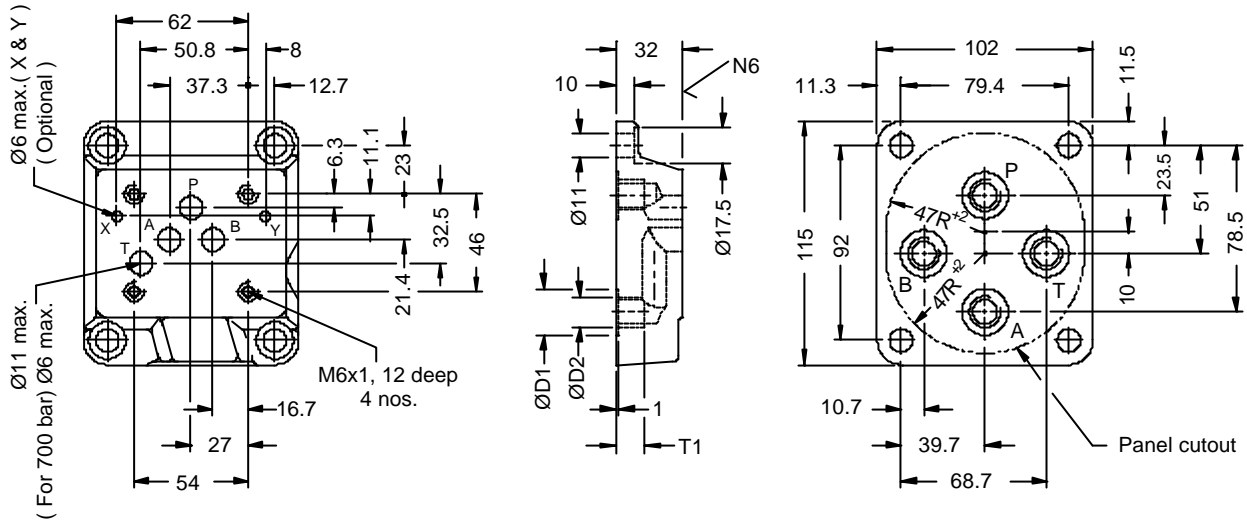
LEVER OPERATED DIRECTIONAL CONTROL VALVE DL10

ENGINEERING

2

Ref. No. P04909

Subplate



Subplate type	$\varnothing D1$	$\varnothing D2$	T1	Approx. mass	Valve fixing screws	Tightening torque
G101	22	G1/4	13			
G102	25	G3/8	13	1.1 kg.	M6 x 50 L, 4 nos.	15 Nm
G103	30	G1/2	15			

Technical specification

ConstructionSpool type.

MountingSubplate body.
Interface as per ISO 4401 - AC - 05 - 4 - A and
IS 10187 - 10 mm diameter nominal port.

Mounting positionOptional.

Flow directionAs per spool type.

Operating pressureFor port P, A and B 350 bar. (Standard valve)
For port P, A and B 700 bar max. (High pressure)
For port T 100 bar. (Both type)

Hydraulic mediumMineral oil.

Viscosity range10. cSt to 380 cSt.

Fluid temperature range-20 °C to +70 °C.

Fluid cleanliness requirementAs per ISO 16/13 or better.

Maximum flow handling capacityRefer performance curves. (Standard valve)
Multiply the curve values by 10 (High pressure valve)

Mass5.6.kg APPROX (Subplate body).



**LEVER OPERATED
DIRECTIONAL CONTROL VALVE
DL10**

ENGINEERING

3

Ref. No. P04909

Performance Curve

Oil used : ISO VG 68, Viscosity : 68 cSt @ 40 °C, Temp. @ test : 50 °C.

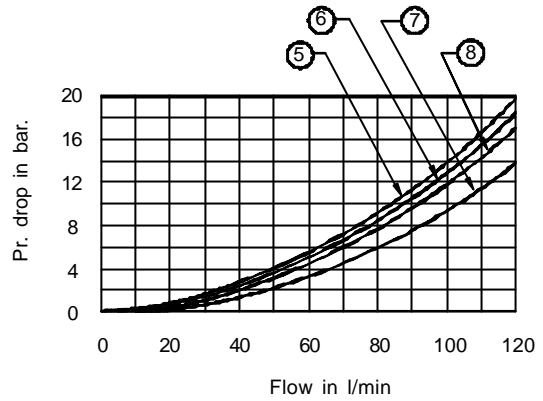
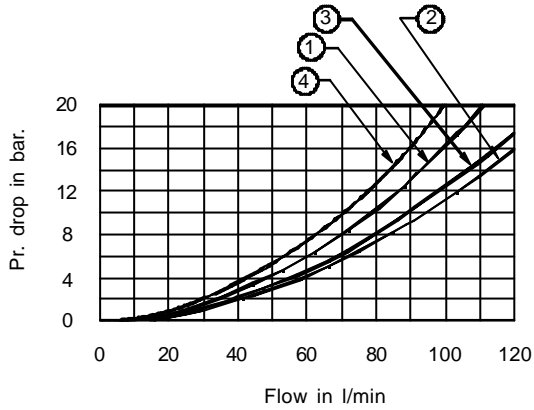


Table showing the relation between the spool type, direction of flow and curve in the above graph to be referred to.

Spool type	Direction of flow / Curve no.				
	P to T	P to A	P to B	A to T	B to T
A	--	1	1	--	--
C	--	1	1	2	3
E	--	1	1	2	3
F	4	1	1	7	3
G	4	1	1	2	3
H	5	6	6	7	8
J	--	1	1	7	8
L	--	1	1	7	3
M	--	6	6	2	3
P	4	1	1	2	8
Q	--	1	1	2	3
W	--	1	1	2	3



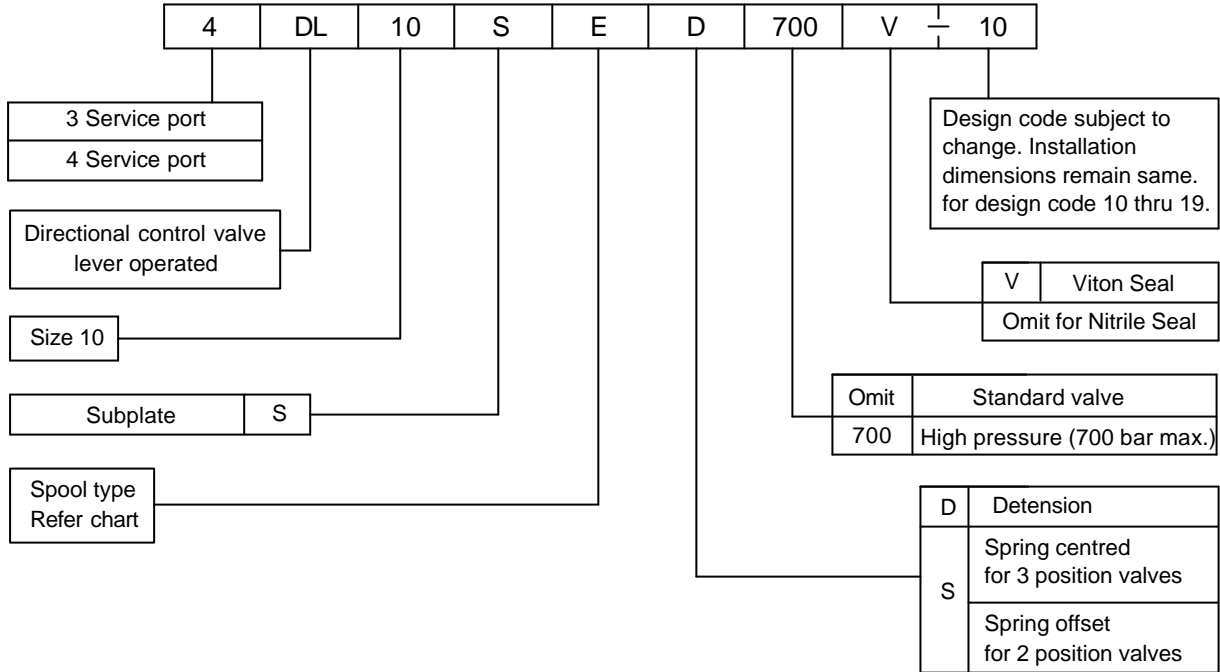
LEVER OPERATED
DIRECTIONAL CONTROL VALVE
DL10

ENGINEERING

4

Ref. No. P04909

Ordering code



Spool chart.

Type	Symbol	Crossover	Type	Symbol	Crossover
	a 0 b			a 0 b	
A			Q		
C			U		
D			V		
E			S1		
F			S2		
G			S3		
H			S4		
J			S5		
L			S6		
M					
P					

All rights reserved.
Subject to revision.

Note : Subplate to be ordered separately.