



PILOT OPERATED CHECK VALVE MODULAR CONSTRUCTION CIM 10

ENGINEERING

1

Ref. No. D 52200A
Release 03/2002

Description

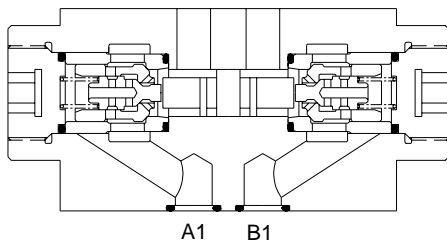
These modular valves are available with the pilot operated check valve facility on either A or B or both A and B ports. The hydraulic opening operation for free flow in reverse direction is achieved by means of internal pilot pressure available from the other working port. Interface conforming to

ISO 4401-AC-05-4-A, IS 10187, DIN 24340.

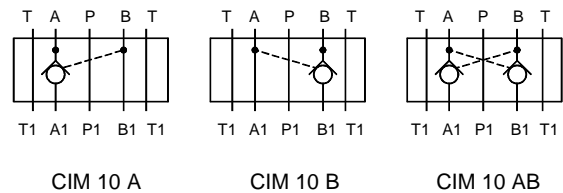
To ensure proper closure of both valve poppets, both user connections should be unloaded when the control valve is in the neutral position by connecting with the return line.



Section

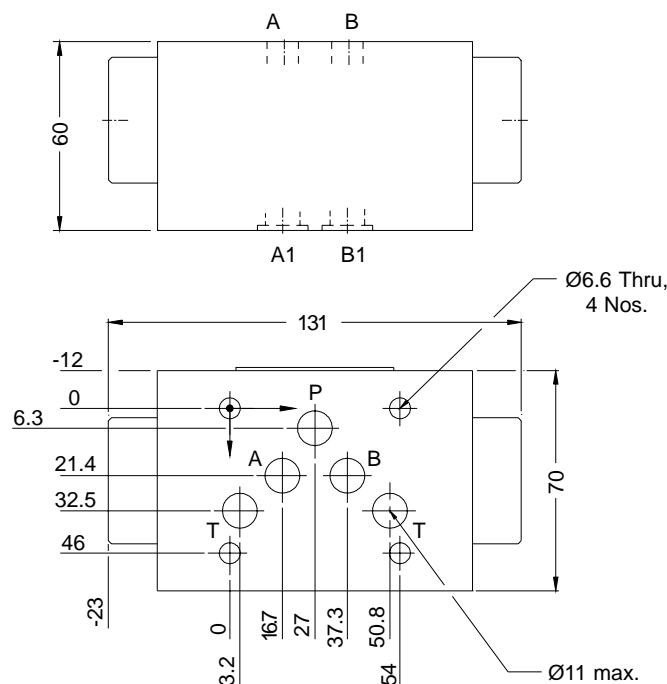


Hydraulic Symbol



Unit Dimension

Dimensions in mm.



Polyhydron Pvt. Ltd.
78-80, Machhe Industrial Estate,
Machhe, Belgaum - 590 014. INDIA.

Phone : +91-(0)831-411001
Fax : +91-(0)831-411002
E-mail : polyhydron@vsnl.com
Website : www.polyhydron.com

D 52200A



**PILOT OPERATED CHECK VALVE
MODULAR CONSTRUCTION
CIM 10**

ENGINEERING

2

Ref. No. D 52200A

Technical Specification

Construction CIM10 --> Modular, Seat type, Internally pilot operated.
 2CI --> Threaded, Seat type, Internally pilot operated.

Mounting Modular type, Threaded type conforming to
 IS 10187
 ISO 4401-AC 05-4-A
 DIN 24340

Mounting position Optional.

Direction of flow Free flow from port A to A1 and/or from B to B1.
 Piloted open flow in opposite direction.

Operating pressure 315 bar for all ports.

Cracking pressure 1, 3 and 5 bar.

Area ratio - Pilot piston : Decom poppet seat ..3.5 : 1

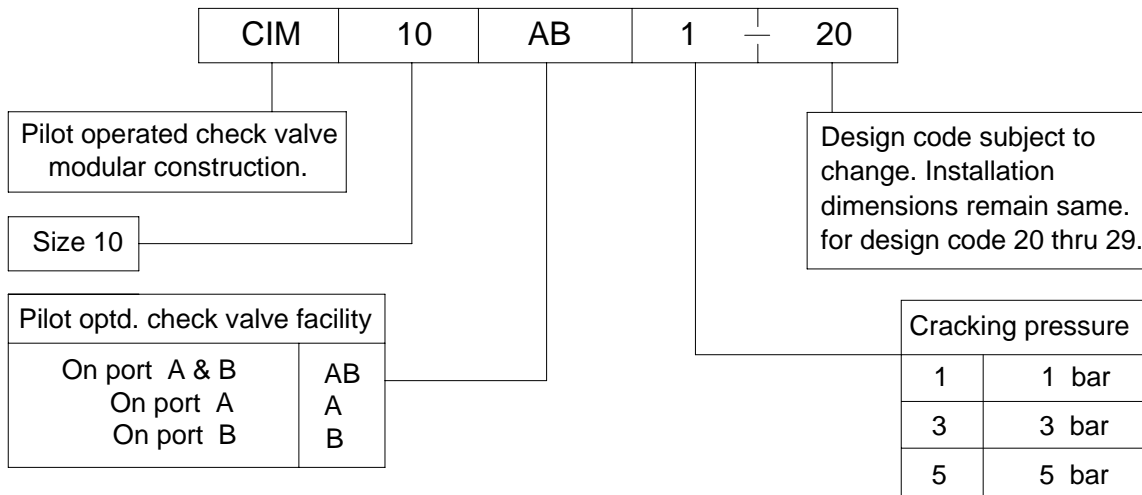
Viscosity range 10 cSt to 380 cSt.

Fluid temperature range -10 °C to +80 °C

Nominal flow handling capacity 80 l/min.

Mass 2.05 kg.

Ordering Code



All rights reserved.
Subject to revision.



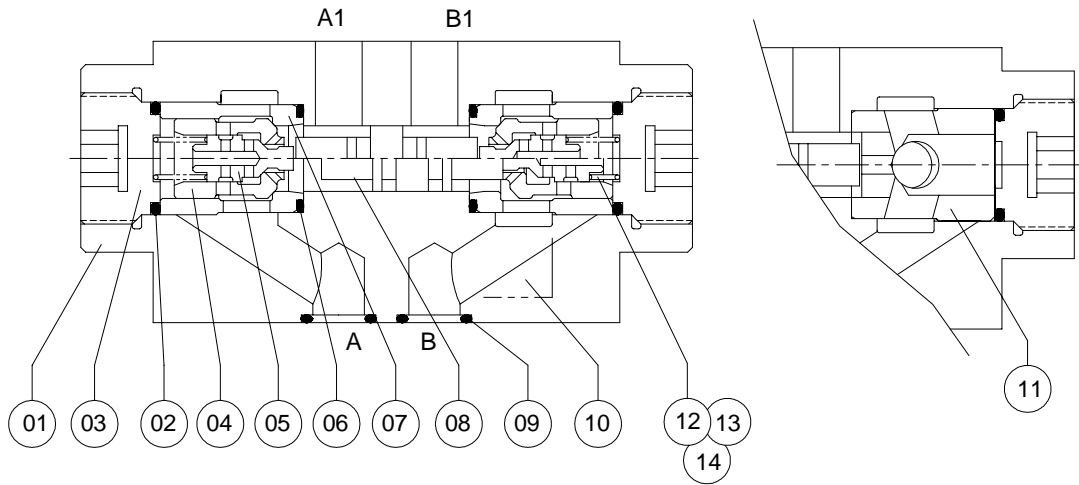
PILOT OPERATED CHECK VALVE
MODULAR CONSTRUCTION
CIM 10

SERVICE

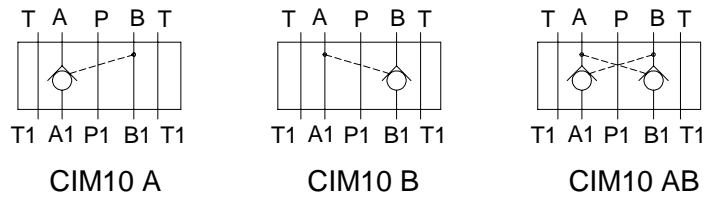
3

Ref. No. S 52200A

Part Details and List



Hydraulic Symbol



SL.NO.	DESCRIPTION / SIZE	Qty	Part No.
01	Body	1	
02	O'Ring (19 I.D. X 2.5 CSD)	2	* 52202
03	End Plug	2	
04	Main Poppet	1	
05	Decomp. Poppet	1	
06	O'Ring (18 I.D. X 2.5 CSD)	1	* 52206
	Casing	1	
08	Piston	1	
09	O'Ring (12 I.D. X 2 CSD.)	4	* 52209
10	Lable	1	
11	Stopper	1	52211
12	Spring 1.0 bar	1	# 52212
13	Spring 3.0 bar	1	# 52213
14	Spring 5.0 bar	1	# 52214
99	Interface cap	1	

Specified Part Nos are available as spares

* - as seal kit
& * as sparekit



PILOT OPERATED CHECK VALVE
MODULAR CONSTRUCTION
CIM 10

SERVICE

4

Ref. No. S 52200A