



# DOUBLE PILOT OPERATED CHECK VALVE 2CI

ENGINEERING

1

Ref. No. D 52200B  
Release 01/2009

## Description

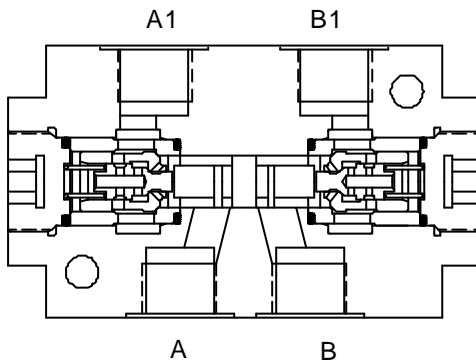
These valves are available with the pilot operated check valve facility on either A or B or both A and B threaded ports.

The hydraulic opening operation for free flow in reverse direction is achieved by means of internal pilot pressure available from the other working port.

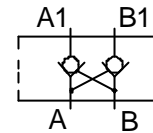
To ensure proper closure of both valve poppets, both user connections should be unloaded when the control valve is in the neutral position by connecting with the return line.



## Section

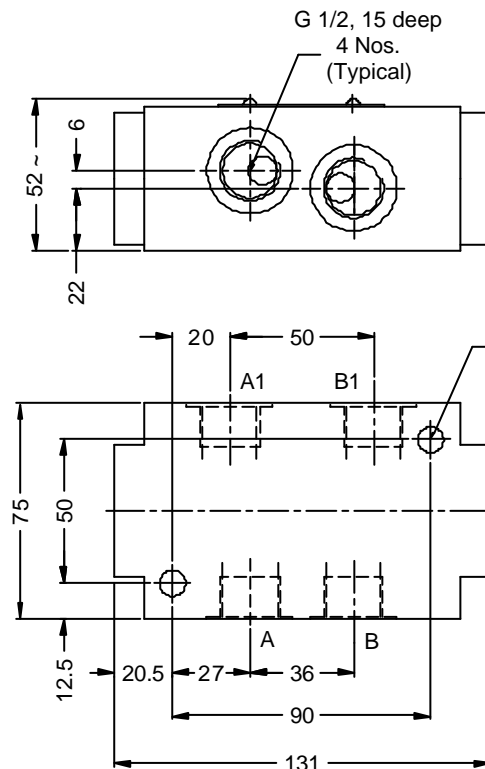


Hydraulic Symbol



2CI10

## Unit dimension



Dimensions in mm.



**Polyhydron Pvt. Ltd.**  
78-80, Machhe Industrial Estate,  
Machhe, Belgaum - 590 014. INDIA.

**Phone** : +91-(0)831-2411001  
**Fax** : +91-(0)831-2411002  
**E-mail** : polyhydron@gmail.com  
**Website** : www.polyhydron.com

D 52200B



# DOUBLE PILOT OPERATED CHECK VALVE 2CI

ENGINEERING

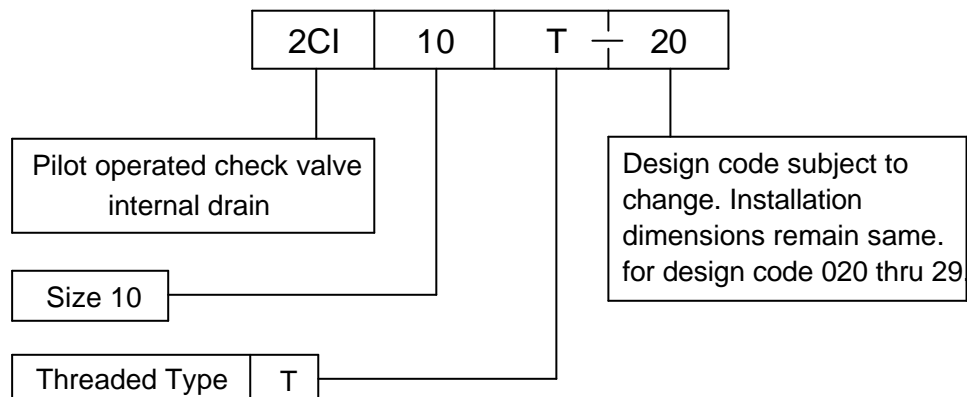
2

Ref. No. D 52200B

## Technical specification

Construction .....	Threaded, Seat type, Internally pilot operated.
Mounting .....	Threaded type, conforming to factory standard.
Mounting position .....	Optional.
Direction of flow .....	Free flow from port A to A1 and/or from B to B1. Piloted open flow in opposite direction.
Operating pressure .....	315 bar for all ports.
Cracking pressure .....	1 bar.
Area ratio - Pilot piston : Poppet seat ....	4 : 1
Viscosity range .....	10 cSt to 380 cSt.
Fluid temperature range .....	-10 °C to +80 °C
Nominal flow handling capacity .....	80 l/min.
Mass .....	2.05 kg.

## Ordering code





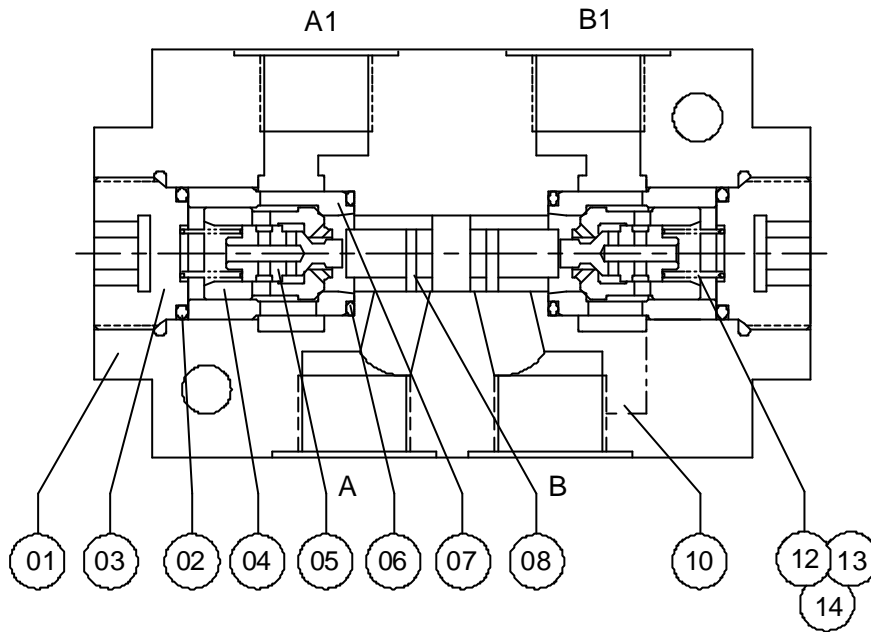
DOUBLE PILOT OPERATED  
CHECK VALVE  
2CI

SERVICE

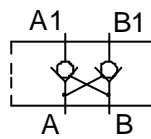
3

Ref. No. S 52200B

Sectional view and Part List



Hydraulic Symbol



2CI10

SL.NO.	DESCRIPTION / SIZE	Qty	Part No.
01	Body	1	
02	O'Ring (19 I.D. X 2.5 CSD)	2	* 52202
03	End Plug	2	
04	Main Poppet	1	
05	Decomp. Poppet	1	
06	O'Ring (18 I.D. X 2.5 CSD)	1	* 52206
07	Casing	1	
08	Piston	1	
09	O'Ring (12 I.D. X 2 CSD.)	4	* 52209
10	Label	1	
12	Spring 1.0 bar	1	# 52212
13	Spring 3.0 bar	1	# 52213
14	Spring 5.0 bar	1	# 52214
99	Interface cap	1	

Specified Part Nos are available as spares

\* - as seal kit

# & \* as sparekit

All rights reserved.  
Subject to revision.