



BELL HOUSING ASSEMBLY BHP

ENGINEERING

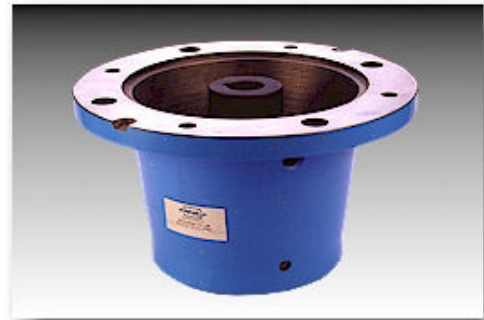
1

Ref. No. P09035

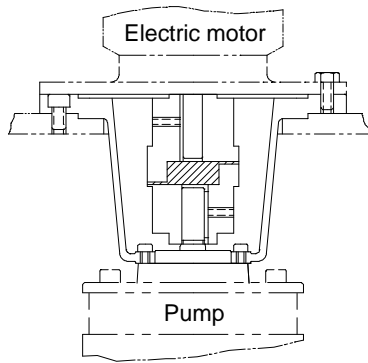
Release 10/2008

Description

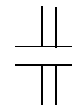
The bell housing series BHP are designed for coupling hydraulic pumps having flanges to electric motors having metric flanges. These bell housings are precisely machined to reduce misalignment of coupled shafts. The correct alignment of the shafts along with the cushioned power transmission through a resilient spider increases the life of the bearings of the pump / motor coupled. The construction also reduces the noise generation considerably.



Section

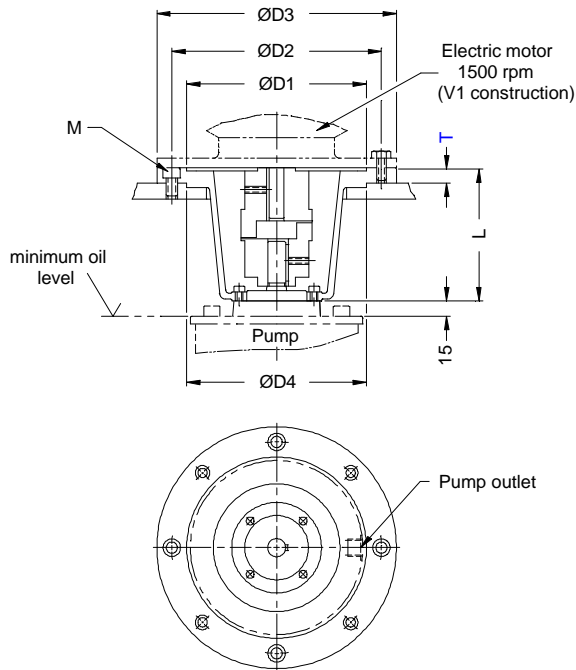


Hydraulic Symbol



Unit dimension

Dimensions in mm.



Series	Ordering Code	ØD1	ØD2	ØD3	ØD4	T	L	M x Nos.	Suitable for electric motor of 1500 rpm, V1 construction	
									kW	hp
1R / 2R	2532/1	130	165	200	130	16	130	M10 x 4	0.75	1
	2532/1.5								1.1	1.5
	2532/2								1.5	2
	2532/3	180	215	250	180	16	145	M10 x 4	2.2	3
	2532/5								3.75	5
	2532/7.5	230	265	300	230	16	170	M10 x 4	5.6	7.5
	2532/10								7.5	10
	2532/12.5	250	300	350	250	20	200	M12 x 4	9.4	12.5
2532/20	15								20	
11R / 12R	9183/5	180	215	250	180	16	155	M10 x 4	3.75	5
	9183/7.5	230	265	300	230	16	180	M10 x 4	5.6	7.5
	9183/10								7.5	10
	9183/12.5	250	300	350	250	20	205	M12 x 4	9.4	12.5
	9183/20								15	20
	9183/25								18.75	25
	9183/30								22.5	30

Polyhydron Pvt. Ltd.

78-80, Machhe Industrial Estate,
Machhe, Belgaum - 590 014. INDIA.

Phone : +91-(0)831-2411001

Fax : +91-(0)831-2411002

E-mail : polyhydron@vsnl.com

Website : www.polyhydron.com

P09035



BELL HOUSING ASSEMBLY BHP

ENGINEERING

2

Ref. No. P09035

Technical specification

Construction	Partially enclosed cast iron housing with flexible couplir				
Mounting style	Flange mounting, factory standard.				
Mounting position	Axis of the assembly can be mounted in any direction.				
High pr. pump (polyhydron) mounting flange	Factory standard.				
Low pr. pump mounting flange	As per IS 2223 / IEC 72-2.				
Flexible coupling	Spider type.				
Working temperature	- 40 °C to + 80 °C				
Mass	HP	01-Feb	03-May	7.5 - 10	12.5 - 30
	1R	7.4 Kg.	10.4 Kg.	15.9 Kg.	24.8 kg
	11R	--	--	--	--

Ordering code

