



COVER FOR PROPORTIONAL RELIEF VALVE CVC*PR

ENGINEERING

1

Ref. No. P09636
Release 08/2001

Description

Designed to control opening & closing of the cartridge valve.

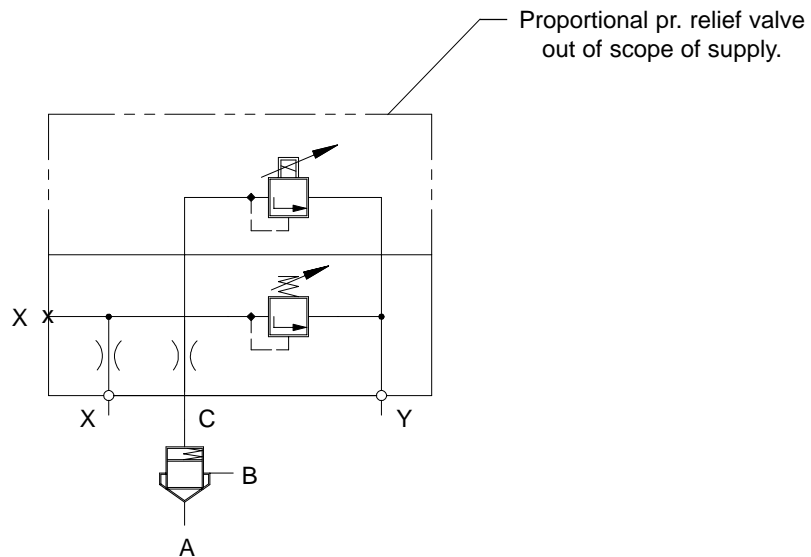
Provision for Pressure control with max. pr.setting.

Provision for remote control.

Normally used for relief function.



Hydraulic Symbol





COVER FOR PROPORTIONAL RELIEF VALVE CVC*PR

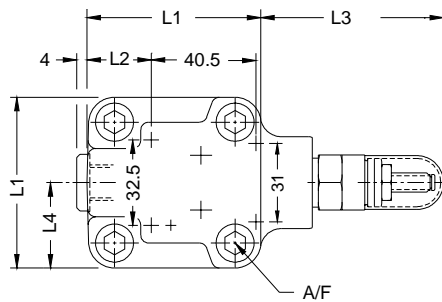
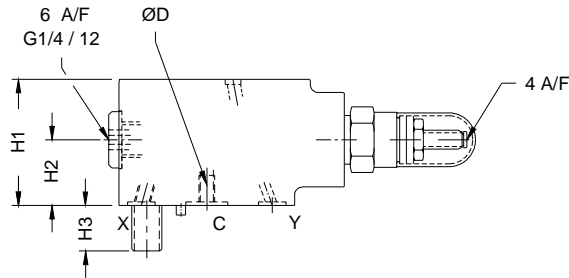
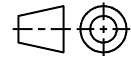
ENGINEERING

2

Ref. No. P09636

Unit dimension

Dimensions in mm.



Size	16	25	32	40
L1	65	85	102	125
L2	24.5	37	57	61
L3	85	81.5	85	65
L4	32.5	42.5	51	62.5
H1	48	50	50	60
H2	25	28	25	35
H3	12	18	24	30
øD	M6 (1)	M6 (1)	M6 (1.2)	M8 (1.2)
A/F	6	10	14	17

Size	Cover fixing S.H.C. screw (10.9)	Tightening torque
16	M8, 40 long.	3.2 kg-m
25	M12, 45 long.	11 kg-m
32	M16, 55 long.	27 kg-m
40	M20, 70 long.	52 kg-m

Note : Mounting interface as per ISO 7368.

Ordering code

