



**CARTRIDGE VALVE COVER WITH
PILOT OPTD. CHECK VALVE &
STROKE LIMITER
CVC*PCTS**

ENGINEERING

1

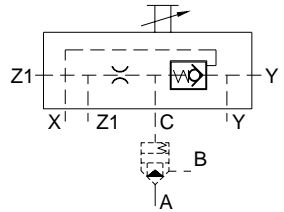
Ref. No. P09809

Release 09/2004

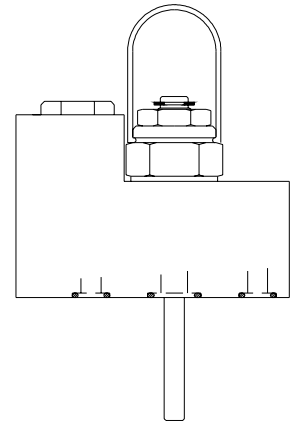
Description

Controls the opening and closing of the cartridge valve with the help of Pilot operated check valve. Stroke limiter is provided to limit the maximum opening of the cartridge.

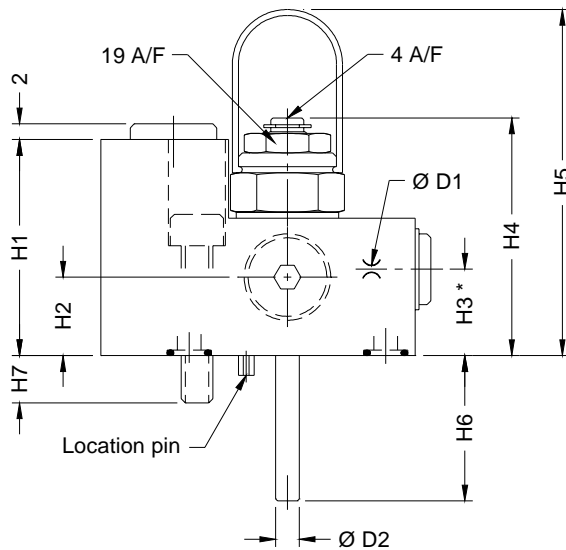
Area ratio :- Pilot piston to poppet seat = 2.6 : 1



Hydraulic symbol



Unit dimension



Dimensions in mm.

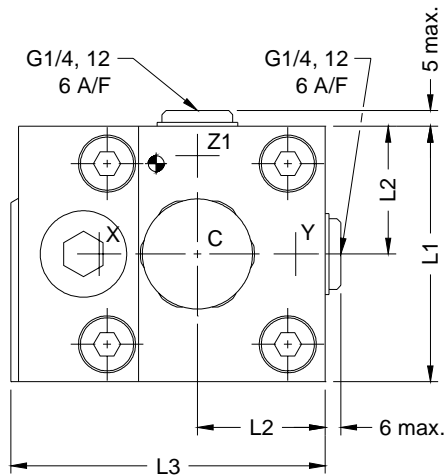
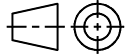


Table 1

Size	16	25	32	40
H1	55	55	53	60
H2	22	0	0	0
H3	22	19	18	25
H4	Open	62	67	83
	Close	70	75	93
H5	88	93	103	117
H6	37	54	59	66
H7	12	18	24	30
ØD1	M6(0.8)	M6(0.8)	M6(0.8)	M6(0.8)
ØD2	6	9.5	11.5	14
L1	65	85	102	125
L2	32.5	42.5	51	62.5
L3	80	88	105	128
Size	S.H.C. Screws 4 nos. (10.9)		Torque da Nm	
16	M8 x 40 L		3.2	
25	M12 x 45 L		11	
32	M16 x 55 L		27	
40	M20 x 70 L		52	

Note : Mounting interface as per ISO 7368.

Polyhydron Pvt. Ltd.
78-80, Machhe Industrial Estate,
Machhe, Belgaum - 590 014. INDIA.

Phone : +91-(0)831-2411001
Fax : +91-(0)831-2411002
E-mail : polyhydron@vsnl.com
Website : www.polyhydron.com



CARTRIDGE VALVE COVER WITH
PILOT OPTD. CHECK VALVE &
STROKE LIMITER
CVC*PCTS

ENGINEERING

2

Ref. No. P09809

Ordering code

CVC 16 PC T S - 10

Cartridge valve cover

Size 16, 25, 32, 40

Pilot operated check valve

With stroke limiter

Design code subject to change.
Installation dimensions remain
same for design code 10 thru 19

S Set screw